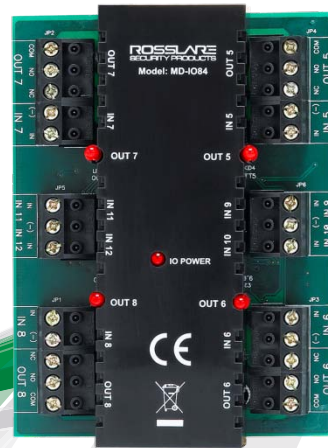


# MD-IO84

## I/O Expansion Board



ROSSLARE'S MD-IO84 I/O EXPANSION BOARD IS ONE OF A HIGHLY ADVANCED LINE OF EXPANSION MODULES THAT WORK SEAMLESSLY WITH ROSSLARE'S STATE-OF-THE-ART AC-225, AC-425 AND AC-525 NETWORKED ACCESS CONTROLLERS. IDEAL FOR RESIDENTIAL AND COMMERCIAL APPLICATIONS, THE MD-IO84 EXPANSION BOARD PACKS FEATURES SUCH AS ADVANCED COMMUNICATION WITH THE CONTROLLER. THE MD-IO84 EXPANSION INCREASES FLEXIBILITY TO THE ACCESS CONTROL SYSTEM BY ADDING FOUR FULLY PROGRAMMABLE RELAY OUTPUTS AND EIGHT SUPERVISED INPUTS TO THE CONTROLLER.

### GENERAL DESCRIPTION

Rosslare's MD-IO84 expansion board is designed with a focus on high quality and reliability and is ideal for residential and commercial applications. The expansion board adds four relay outputs and eight supervised inputs to the access control panel. As a result, an access control panel with an MD-IO84 expansion board can support a total of 12 supervised inputs and 8 5 A Form-C relay outputs.

Easy to install and operate, the MD-IO84 expansion board features state-of-the-art supervised communications with the controller. The host access controller has complete control over the additional inputs and outputs of the MD-IO84 expansion board.

The MD-IO84 is compatible with Rosslare's AC-225, AC-425 and AC-525 networked control panels.

### MAIN FEATURES

- Eight additional supervised inputs
- Four additional fully programmable relay outputs

- LED status feedback for 12 V power and relay activation
- Cost effective and simple installation
- Compatible with Rosslare's AC-225, AC-425 and AC-525 networked access controllers
- Input and output configurability using Rosslare's AS-525 AxTrax™ software

# SPECIFICATIONS

## ELECTRICAL SPECIFICATIONS

■ Input Voltage	12 VDC
■ Input Current (not including devices)	Standby: 30 mA Maximum: 135 mA
■ Number of Outputs	4
■ Number of Inputs	8
■ Output Relays	5 A with N.O., N.C. and COM contacts Form-C Relays
■ Inputs Voltage	5 VDC maximum voltage

## INPUT SPECIFICATIONS

■ Input Type	Selectable: Normally Open, Normally Closed, Non-supervised (two states), supervised with one resistor (three states), supervised with two resistors (four states)
--------------	-------------------------------------------------------------------------------------------------------------------------------------------------------------------

## LED INDICATORS

■ Power LED	Active when mounted correctly on the host controller (AC-225 or AC-525)
■ Output LEDs	Four LEDs; each output LED is active when an output relay is activated and N.O. to COM contacts are shorted

## PHYSICAL SPECIFICATIONS

■ Dimensions (L x W x H)	100 x 75.9 x 32.5 mm (3.93 x 2.98 x 1.28 in.)
■ Weight	98.2 g (0.21 lbs)

## SYSTEM COMPONENTS

The MD-IO84 is compatible with a variety of Rosslare Security's family of state-of-the-art networked access controllers, Rosslare's AS-525 AxTrax™ software and many third party access control systems.

## PRODUCT WARRANTY

2-year Limited Product Warranty

## ABOUT ROSSLARE SECURITY

Rosslare Security Products, a division of Rosslare Enterprises Ltd., has been manufacturing high-quality security products since 1980. The company's three main lines – Access Control, Intrusion Detection and Guard Patrol – together with a growing product range have transformed Rosslare Security into a major worldwide force in security. Rosslare holds itself to the highest standards of customer service and manufacturing (ISO 9001:2008, ISO 14001:2004, ISO 13485:2003). The company complies with the EU Directive 2002/95/EC on Restriction of Hazardous Substances (RoHS).

Visit our website: [www.rosslaresecurity.com](http://www.rosslaresecurity.com)

AxTrax™ is a trademark of Rosslare Enterprises Ltd.



**ROSSLARE**  
SECURITY PRODUCTS  
Experience The Difference