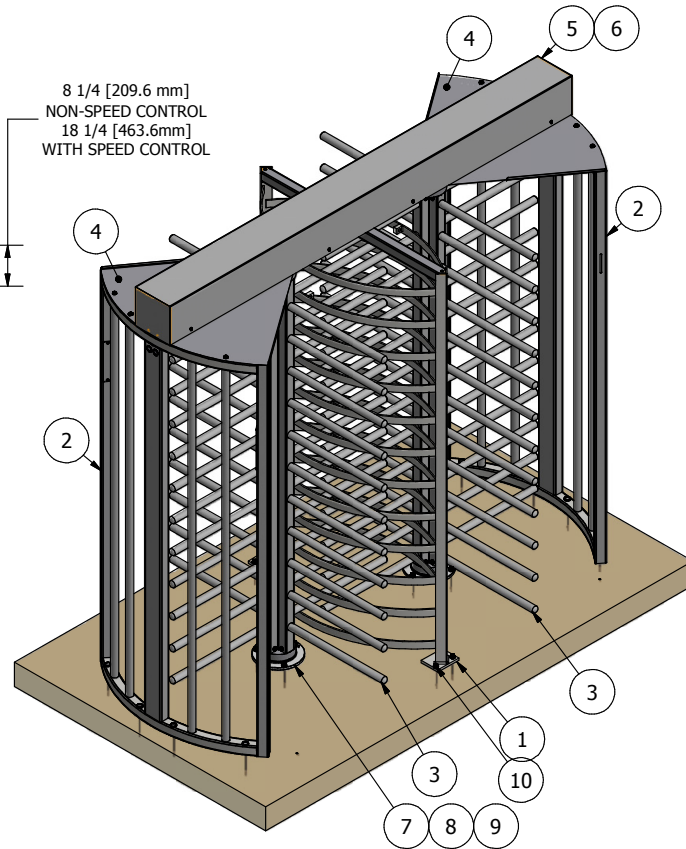


8 1/4 [209.6 mm]  
NON-SPEED CONTROL  
18 1/4 [463.6mm]  
WITH SPEED CONTROL



**GENERAL NOTES:**

TURNLOCK-100ES = 1 DIRECTION ELECTRICALLY CONTROLLED.  
TURNLOCK-100ES2 = 2 DIRECTIONS ELECTRICALLY CONTROLLED.  
TURNLOCK-100C = MECHANICAL UNIT.

GALVANIZED STEEL CONSTRUCTION.

MINIMUM PAD SIZE SHOWN. MUST BE LEVEL WITHIN 1/4".

BRACE BARRIER POST AT TOP TO ADJACENT SURFACE.

ALLOW 8" [203MM] FOR REMOVAL OF LIFT-OFF COVER.  
ALTERNATE COVERS AVAILABLE.

**ELECTRICAL NOTES:**

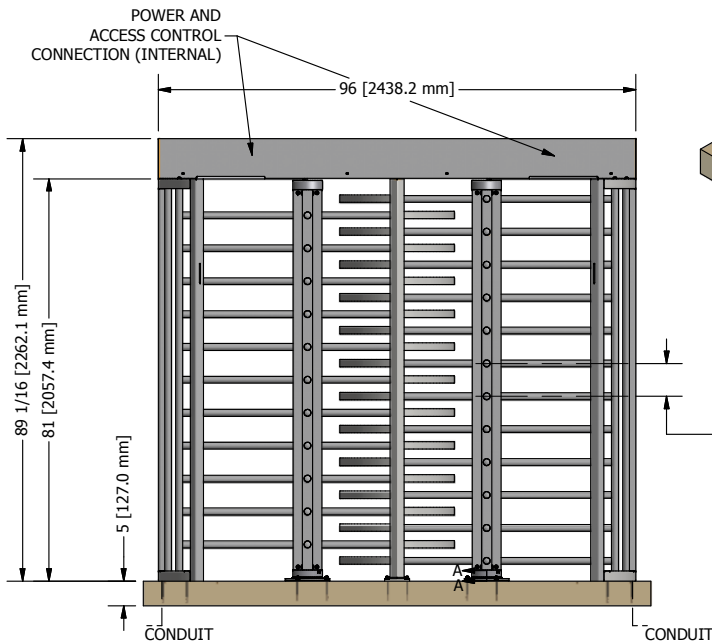
POWER SERVICE REQUIRED:  
110VAC/220 VAC/24 VDC (1) PHASE 60HZ, 15A, NEUTRAL, GROUND.

4 LOCATIONS AVAILABLE FOR CONDUIT ACCESS.

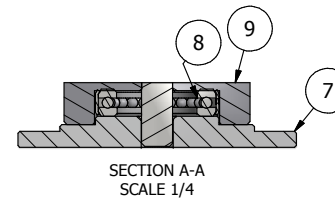
AUTHORIZATION REQUIRES DRY CONTACT FROM ACCESS CONTROL.

**CODED NOTES:**

1. BARRIER ASSEMBLY, WELDED - GALVANIZED STEEL
2. SHIELD ASSEMBLY, WELDED - GALVANIZED STEEL
3. ROTOR ASSEMBLY, WELDED (4) - GALVANIZED STEEL
4. CEILING PLATE - GALVANIZED STEEL
5. MECHANISM CHANNEL - ALUMINUM (N.S.C) OR STEEL (S.C.)
6. CHANNEL COVER - STAINLESS STEEL
7. BASE PLATE - ANODIZED ALUMINUM
8. BOTTOM BEARING
9. BOTTOM FLANGE
10. ANCHOR BOLTS (9), PROVIDED)



6.625  
[168.3 mm]  
(TYP.)



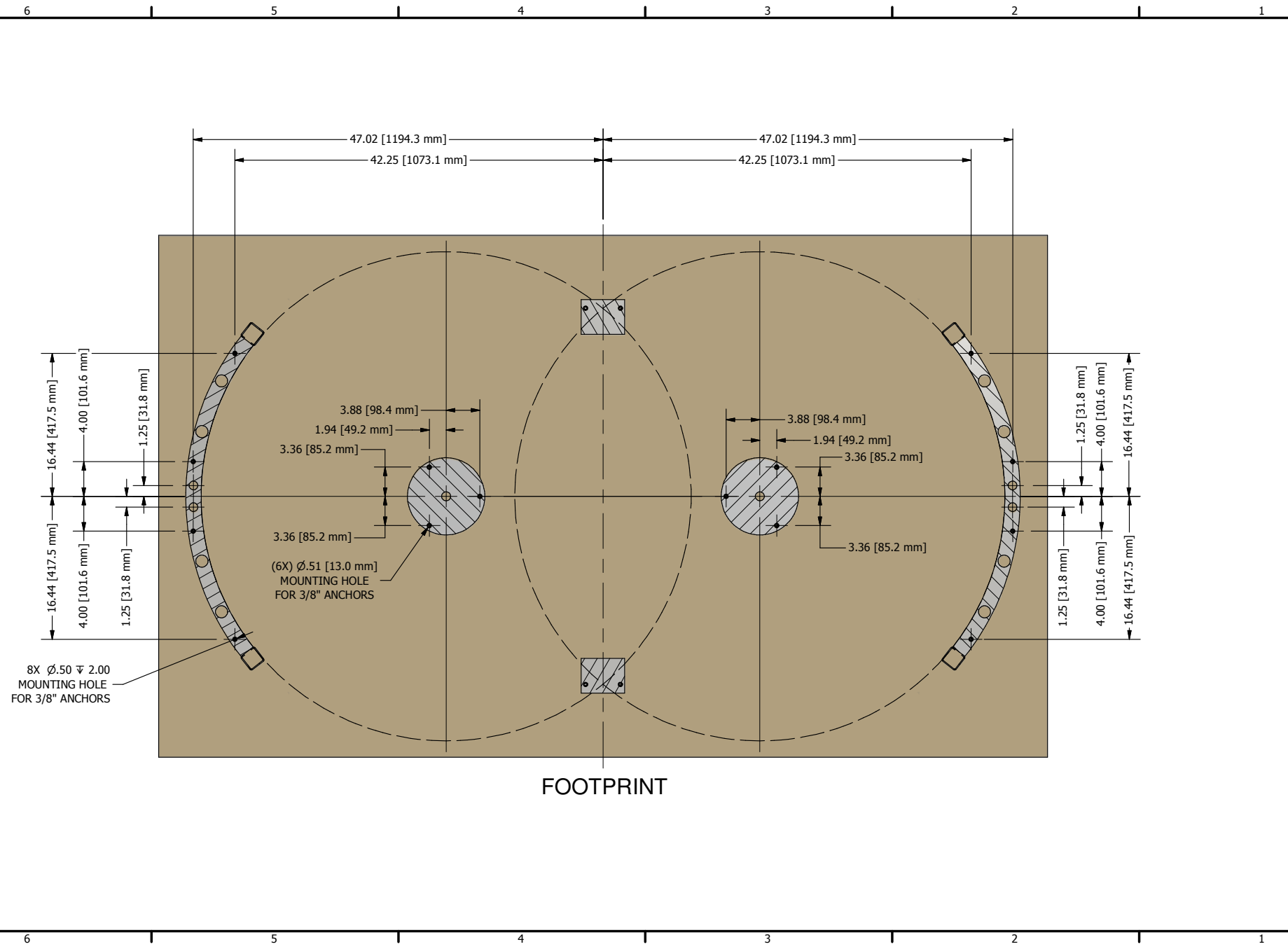
**BOON EDAM**  
Your Entrance. Our Technology.  
402 McKinney PKWY., Lillington, NC 27546 - (910) 814-3800 © BOON EDAM

Project: \_\_\_\_\_  
Job #: \_\_\_\_\_  
Rev: \_\_\_\_\_  
Rev Date: \_\_\_\_\_

Customer: \_\_\_\_\_  
Contractor: \_\_\_\_\_  
Architect: \_\_\_\_\_

By: jpl  
11/16/2007

Page: 1 of 2  
Scale: 1:25



FOOTPRINT