



Client StandAlone

User Manual
Version 5

TABLE OF CONTENTS

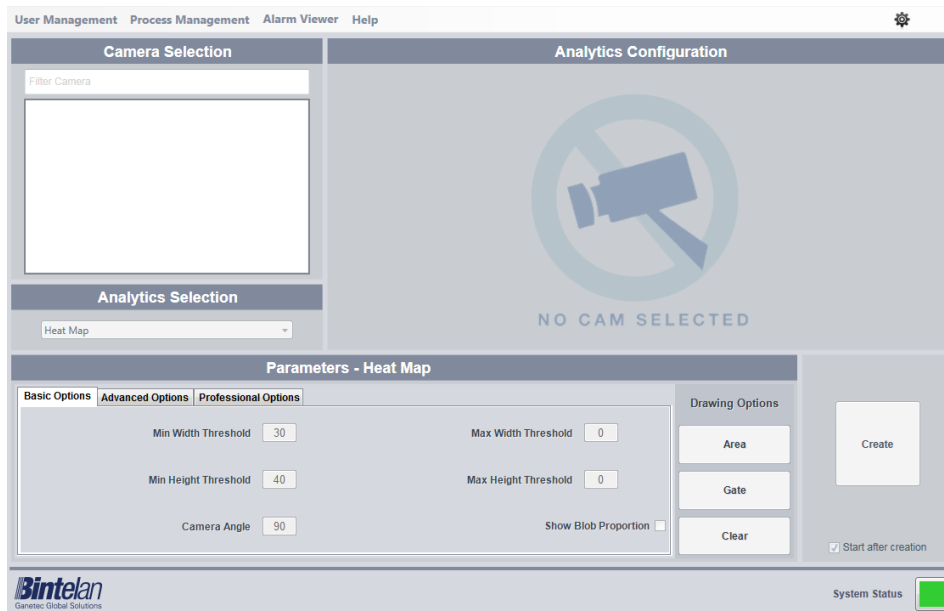
1 Introduction to Bintelan StandAlone Client	2
2 Process Management.....	5
2.1 Start Analytics	5
2.2 Manage Analytics	7
3 User Management.....	9
3.1 User Enrollment.....	9
3.2 User Search: Update / Delete users	10
4 Viewing Alarms	12
4.1 Alarm Viewer	12



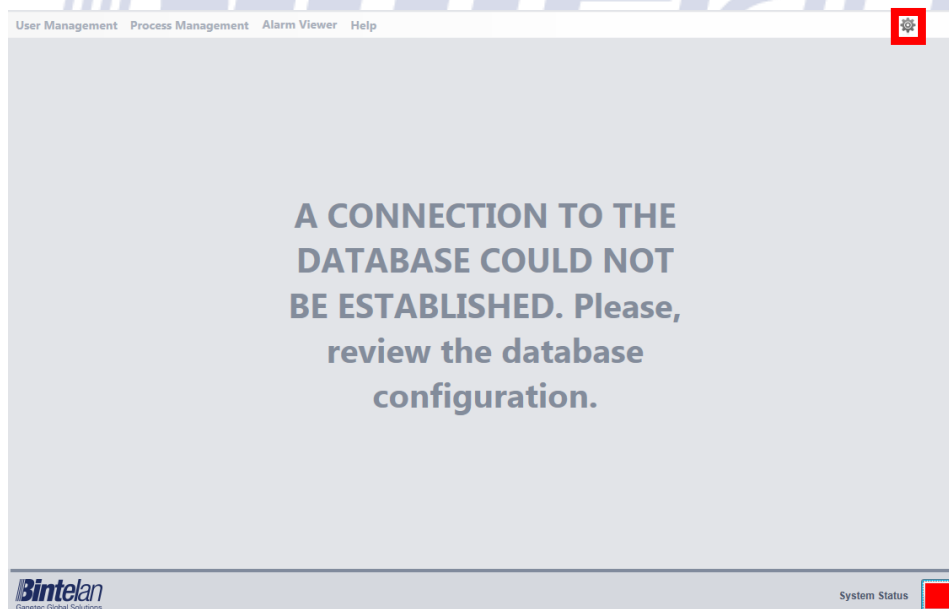
For technical support contact our Support Department:
support@ganetec.com

1 Introduction to Bintelan StandAlone Client

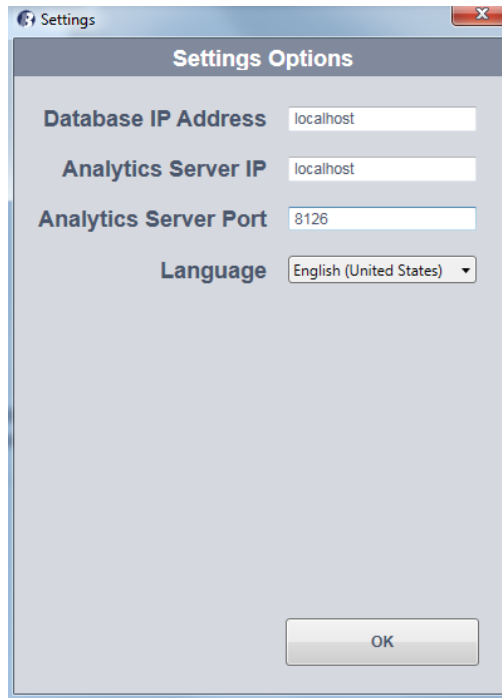
The **Bintelan StandAlone Client** can be installed on any server. If you install it in the same computer as the Bintelan Analytics Platform, its configuration will be automatically detected.



But if you are on another server, you will see the following screen:



And you would need to perform a small configuration process. Access the Client **Settings** from the upper right corner, a popup window as shown below will be opened.

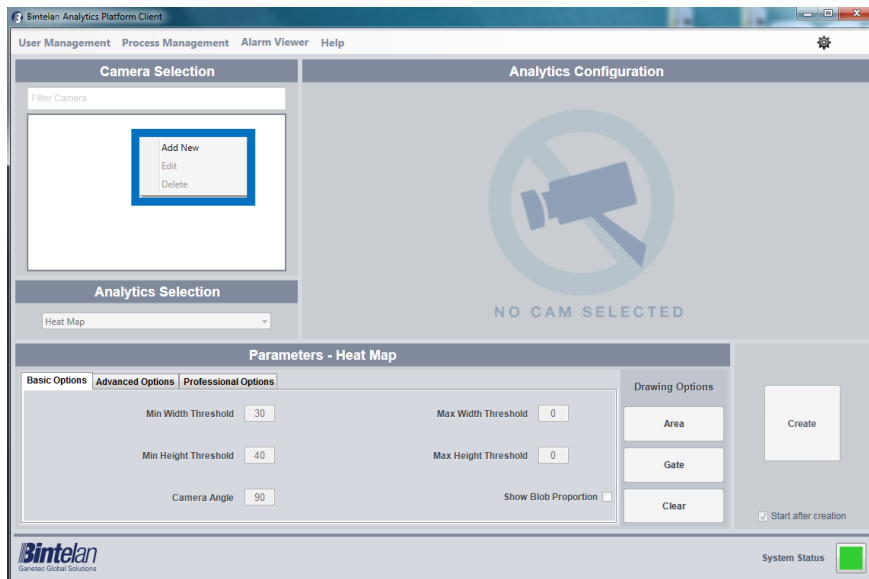


In this panel the following parameters can be configured:

- **Database IP:** IP of the database.
- **Analytics Server IP:** IP Server Analytics.
- **Analytics Server Port:** port Analytics Server (default 8126).
- **Language:** a dropdown to select the desired language.

Bintelan
Ganetec Global Solutions

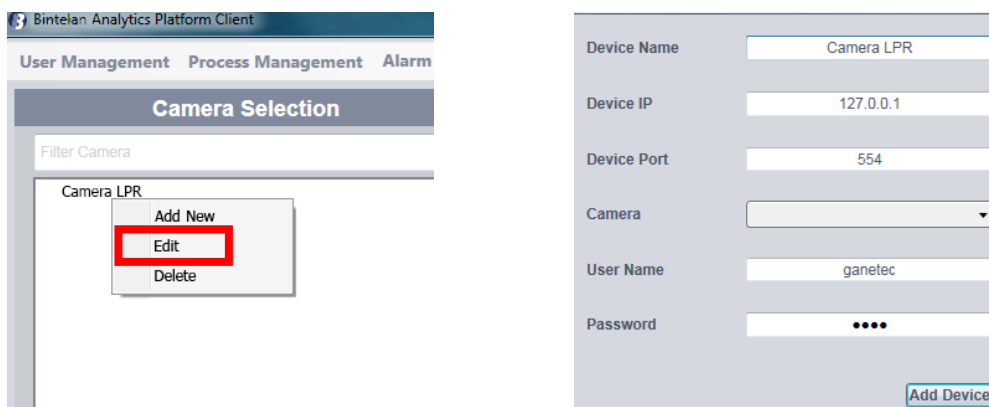
In the "Camera Selection" panel you can **Add New**, **Edit** or **Delete** cameras by right clicking and selecting the desired option.



Firstly, you can add a new camera by selecting the **Add New** option. This will open a popup window where the following camera settings can be introduced:

- **Device name:** the name you want to use for the new camera you are adding.
- **Device IP:** the camera IP address.
- **Device Port:** camera port (the default port of RTSP protocol is 554).
- **User Name:** the required user name to connect to the camera.
- **Password:** the required password to connect to the camera.

The **Edit** option of the camera parameters is also available for the existing cameras. It can be accessed by right-clicking on the camera and selecting "**Edit**". This will open a popup window where you can view and edit the camera parameters.



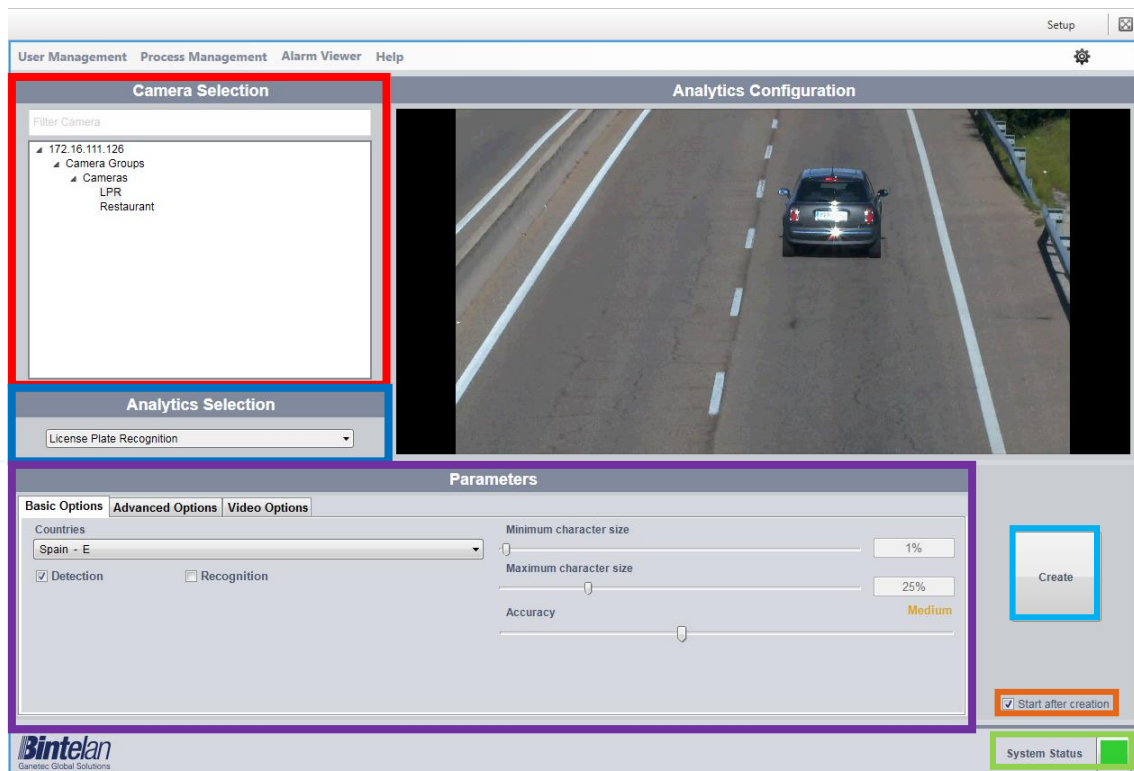
Finally, if you want to remove a camera, select its name and choose the **delete** option with the mouse right button. The camera will be deleted from the list.

2 Process Management

The default window in the Bintelan Milestone Plugin is the "**Start Analytics**" from the "Process Management" menu. In this pane any installed module can be configured and started from the desired camera.

2.1 Start Analytics

From the "**Start Analytics**" panel, you can create the processes for each modules you have installed. The creation procedure of every module is always the same. In order to configure any type of video analytic, we must first **select the camera** and then **select the type** from a dropdown list. This selection will load its corresponding **configuration panel**. This panel contains three tabs: **basic** options, **advanced** options and **video or professional** options.



Once all the parameters are correctly configured, including the Basic, Advanced and Video options, we must create a new process. As depicted in the above image, below the **Create** button is a checkbox labeled as **Start after creation**. This checkbox ensures, if selected, that the process will be initiated after its creation. If you prefer to manually start the process simply uncheck this option.

We can also check if the **global system state** is correct. Click on the colored square at the right of the message system status for additional details. There are three possible states of the system, represented by colors:

- **Ok:** all Bintelan Analytics Platform modules and services are working properly.
- **Warning:** one or more modules or services in the Bintelan Analytics Platform is showing a warning. Warnings do not affect the correct performance of the system, but should be verified and resolved to avoid future errors.
- **Error:** one or more of the modules or services in the Bintelan Analytics Platform is having problems. By clicking the icon you can check the source of the problem.



2.2 Manage Analytics

Additionally, you can view and manage the processes created. Select the "**Manage Analytics**" from the "**Process Management**". You will obtain a detailed view of all the processes created and their current status. A process can have up to seven different states:

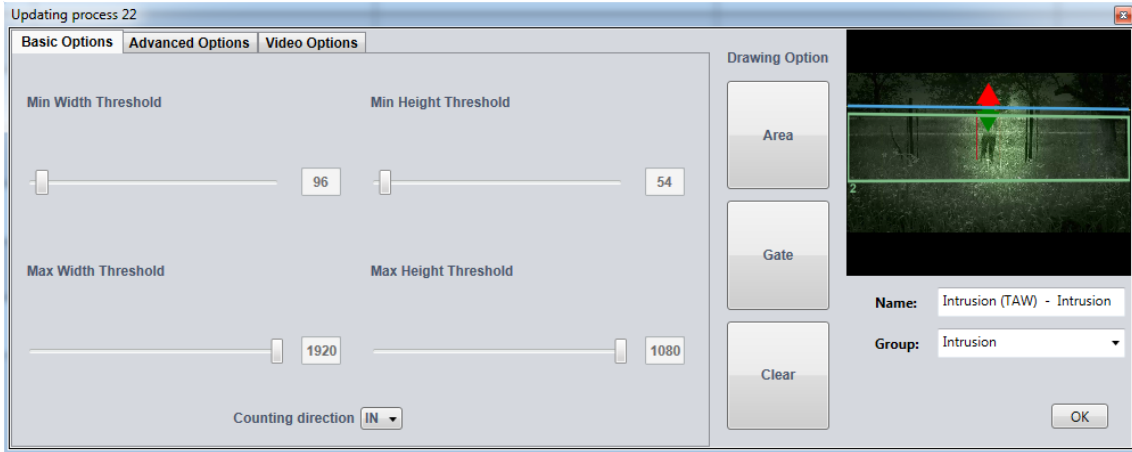
- **Launching**: the process has just been created.
- **Scheduling**: the process is queued and will start soon.
- **Initializing**: the process is starting and configuring.
- **Processing**: the process is running correctly. The process output should now appear.
- **Stopping**: the process is stopping.
- **Hold**: there something missing and the process cannot be started. Usually this happens when you need a hardware license to be placed in the Licenses folder under Bintelan installation path.
- **Failed**: the process could not execute properly. Check the logs or contact support.
- **Empty state**: if this field is empty the process is ready to be started. Currently the process is stopped.



Start Analytics				Alarm Viewer			Help				
Manage Analytics				Group	Analytic	Source	Status	Options			
<input type="checkbox"/>	Select all										
<input type="checkbox"/>	Face Detection - Restaurant	Testing	Face Detection	Restaurant	Launching						
<input type="checkbox"/>	License Plate - LPR	Testing	License Plate	LPR	Scheduling						
<input type="checkbox"/>	Face Detection - Restaurant	Testing	Face Detection	Restaurant	Initializing						
<input type="checkbox"/>	Face Recognition - Enroll	Testing	Face Recognition	Enroll	Processing						
<input type="checkbox"/>	Intrusion - LPR	Testing	Intrusion	LPR	Stopping						
<input type="checkbox"/>	Area Counting - LPR	Testing	Area Counting	LPR	Hold						
<input type="checkbox"/>	Gate Flow - LPR	Testing	Gate Flow	LPR	Failed						
<input type="checkbox"/>	Face Recognition - Enroll	Testing	Face Recognition	Enroll							

Furthermore, you can **Start**, **Stop** and **Delete** any process from this pane. You will only have to press the desired button in each case. You should take into account that you will only be able to delete a process if it has been previously stopped.

Moreover, you can also configure any process once it has been created. In this way you will be able to perform fine adjustments to the module in order to achieve better results or due to changes in the camera or the scene. To do so, click the **Settings** button, between the stop and delete buttons. A window containing all the module information will appear, as depicted in the next image. From it, you will be able to adjust all the parameters that correspond to the module selected.



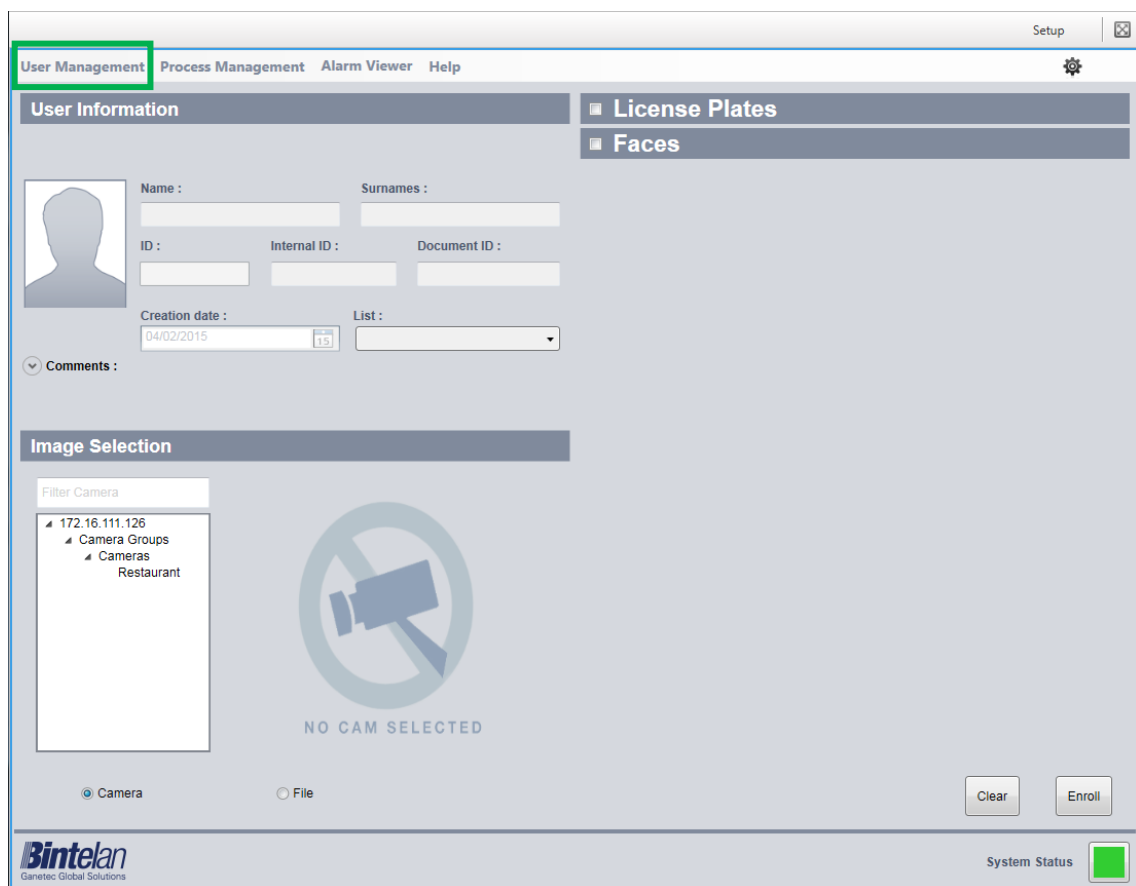
Bintelan
Ganetec Global Solutions

3 User Management

Before initializing a recognition process you must register a new user in the database. To do this, access the menu option **User Management** located in the upper left corner of the screen. This menu has two screens: **Search** or **Register**. Then both screens will be explained.

3.1 User Enrollment

Select the Register option from the **User Management** Menu to begin the enrollment of a new user in the database.



Furthermore, from the Registration screen, if you right click with the mouse the **Lists** pane, you would be able to **Add**, **Delete** or **Rename** them. In this way, you can easily and quickly manage all your lists.

3.2 User Search: Update / Delete users

This section will allow us to manage the user information of previously registered users, being able to **Edit** so we can add or edit the bioreference of the user, **Update** in order to make some minor changes like changing name, lists, etc or **Delete** the user.

The screenshot displays the Bintelan User Management interface. At the top, there are navigation tabs: 'User Management', 'Process Management', 'Alarm Viewer', and 'Help'. A 'Setup' button is in the top right corner. The main content area is divided into two panels. The left panel, titled 'User Information', contains a form with fields for 'Name', 'Surnames', 'ID', 'Internal ID', 'Document ID', 'Creation date', and 'List'. A 'Comments' section is also present. Below the form are buttons for 'Insert License Plate' and a dropdown menu. The right panel contains two dropdown menus labeled 'Faces' and 'License Plates'. Below the form is a row of buttons: 'Search Profile', 'Search', 'Clear', 'Edit', 'Update', and 'Delete'. At the bottom, there is a 'Results' section with a header 'Results 0 entries' and a pagination control showing '10' and '< 1 / 1 >'. The Bintelan logo and 'System Status' indicator are at the bottom left and right respectively.

User search options: on the Search screen there are two options to find the user: a **user information** and **Lists**.

- **User Information:** introduce the user data you want to search in their correspondent fields (the more fields you fill, the higher the accuracy of the results) and then press the Search button
- **Lists:** select one or several lists from which you want to know the user information and click the Search button.

In the **lower panel** all search results appear. By default they will appear 10 to 10. You can change this value in the right panel dropdown. Select the user that you want to manage. Its information will fill in the **user information fields** and their associated biometric templates.

The data of the selected user is displayed in the **user information** panel and its corresponding **lists** where the user is registered or not. Thus, we can easily manage both user data and lists to which it is linked. By clicking the **Update** button the changes are saved. Pressing the **Delete** button deletes the record from this user database forever, and the biometric models and license plates bound to it.



4 Viewing Alarms

The visualization of the alarms can be performed in two ways:

1. Through Bintelan **Alarm Viewer**, located within the Bintelan Client platform.
2. Through the **VMS Client** you are using after a correct configuration.

As you are using the StandAlone Client, you will only have the first option available.

4.1 Alarm Viewer

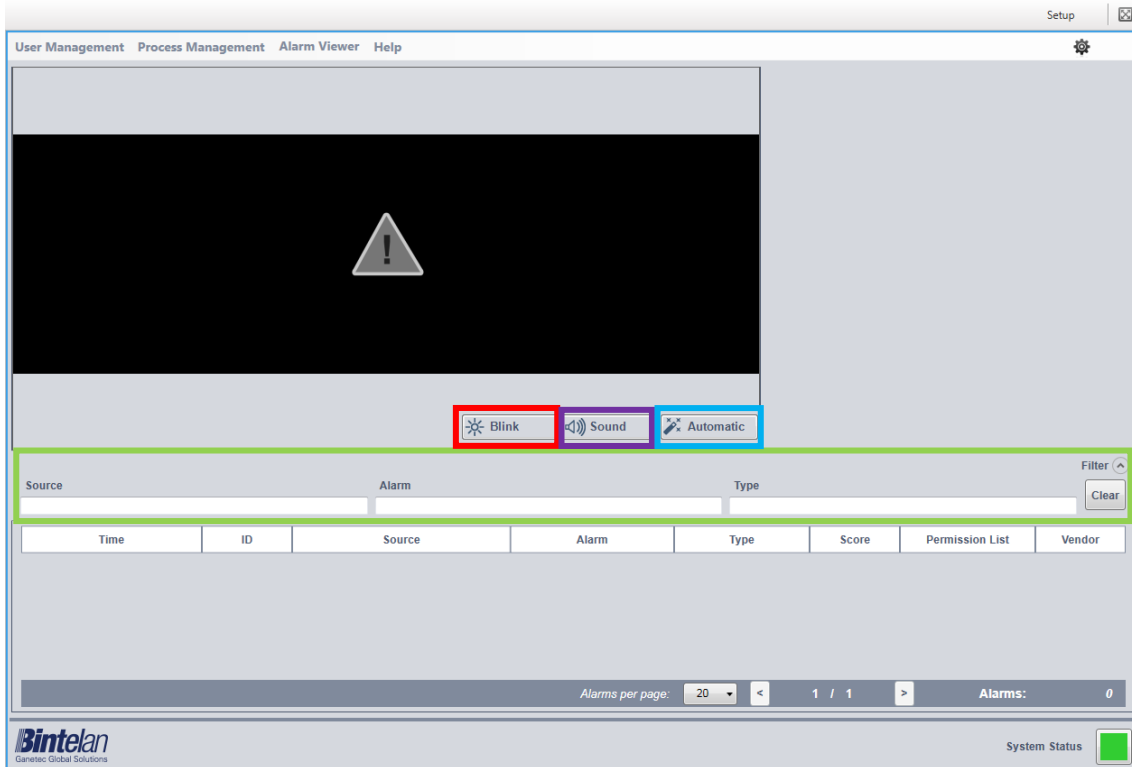
Inside the Bintelan Client, both the StandAlone-and the specific ones from each VMS, you can view the generated alarms in the "**Alarm Viewer**" tab. On this screen, the information of the alarms is detail presented. The layout consists of three different areas. In the top left we have the image of the alarm, where a square highlights the source of it. In the case of using a video analytics involving recognition (facial or lpr), the square color will match its accuracy level (**Very Low** - **Low** - **Medium** - **High** - **Very high**).

Time	ID	Source	Alarm	Type	Score	Permission List	Vendor
11:33:40 04/12/2014	32532	INTRUSION Camera	INTRUSION	INTRUSION	Medium		
11:33:40 04/12/2014	32531	INTRUSION Camera	INTRUSION	INTRUSION	Low		
11:33:50 04/12/2014	32530	INTRUSION Camera	INTRUSION	INTRUSION	Very High		
11:33:51 04/12/2014	32529	INTRUSION Camera	INTRUSION	INTRUSION	Medium		
11:33:56 04/12/2014	32528	INTRUSION Camera	INTRUSION	INTRUSION	Medium		
11:32:56 04/12/2014	32527	INTRUSION Camera	INTRUSION	INTRUSION	Low		
11:32:55 04/12/2014	32526	INTRUSION Camera	INTRUSION	INTRUSION	Very High		
11:32:53 04/12/2014	32525	INTRUSION Camera	INTRUSION	INTRUSION	Low		

At the top right the information of the registered user is displayed. If you are using analytics involving detection, **an image** from the alarm will appear over this information.

Finally, under both screens is **the alarm list**, where the parameters of each alarm are depicted: date and exact time of the alarm, its identifier, its source (camera name), the object's name, the analytics type, accuracy, list (in case of recognition) and analytics provider. Additionally, it has an option to **filter the alarms**. Above the list, on the right, you

can expand the options available to filter the alarms. You can filter by **source**, **alarm name** or **type**, using one or more of these options simultaneously.



In addition, the "Alarm Viewer" has 3 operational modes, which can be activated by selecting or deselecting the buttons at the bottom right of the alarm image. The first mode is called **Blink**, it activates a red flashing border around the alarm image every time a new one is received. The second one, **Sound**, enables an acoustic signal after receiving a new alarm. The last mode, **Automatic** implies that the last alarm received is displayed on the image and in the information layout. These three modes can be selected independently or combined as the end user prefers.



www.ganetec.com