



# Bintelan Analytics Platform

User Manual  
Version 5

## TABLE OF CONTENTS

1 Bintelan Analytics Platform overview.....	3
2 System Requirements.....	4
2.1 Hardware requirements.....	4
2.2 Used Ports .....	4
3 Installation process.....	5
4 Bintelan Management Application .....	7
4.1 Introduction to Bintelan Management.....	7
4.2 Service Monitoring.....	8
4.3 License Activation.....	9
4.4 Hardware Licenses .....	12
4.5 Offline Licenses.....	13
4.6 System Monitor.....	13
4.7 Database Management .....	14

For technical support contact our Support Department:  
[support@ganetec.com](mailto:support@ganetec.com)

***Bintelan***  
Ganetec Global Solutions

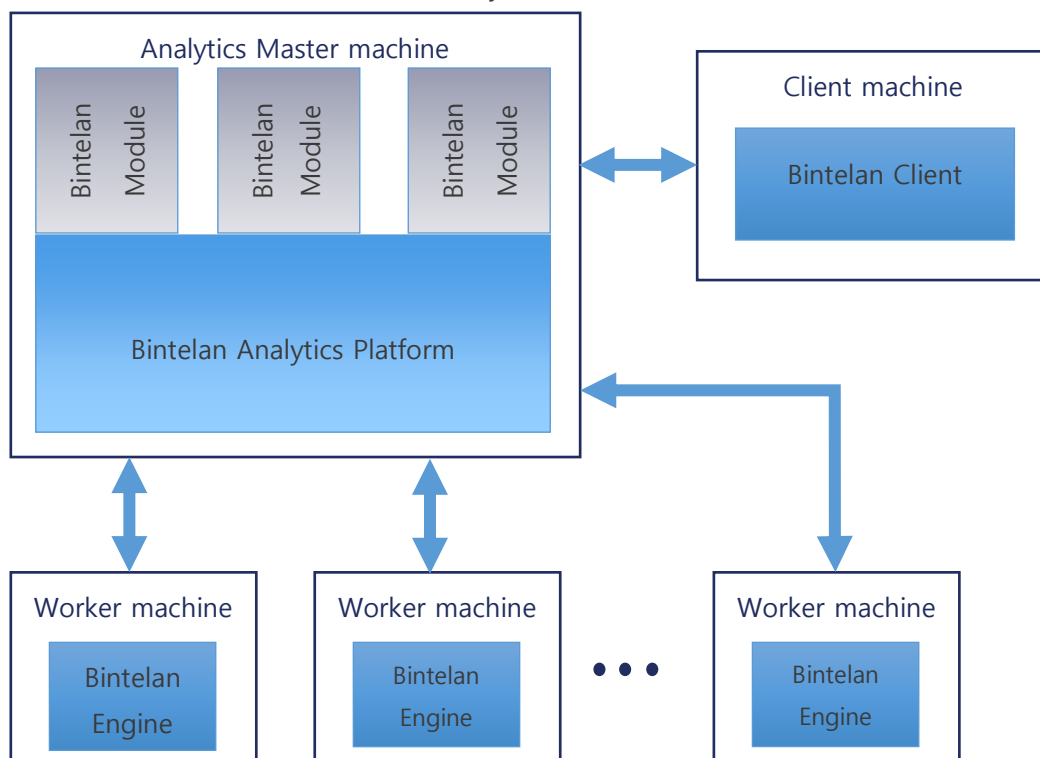
# 1 Bintelan Analytics Platform overview

Bintelan Analytics Platform is designed to group all analytics and manage them from a centralized client. This platform is formed by 3 types of components:

- **Bintelan Analytics Platform:** this is the core module of all the product. This component is the responsible of balancing all the load of analytics between the machines that belong to the analytics platform. Also, it is the responsible of managing alerts and the centralized configuration of the whole system.
- **Bintelan Modules:** the installation of these modules on Bintelan Analytics Server allows us to us to execute specific analytics on the server.
- **Bintelan Client:** this is the part of the software where the user will be able to launch and manage analytics. There are two kinds of Bintelan Clients, those which are integrated on a VMS and the ones running as Stand-Alone.

We can also have a look of the platform from the point of view of the machines which will compound the platform:

- **Analytics Master:** this is the main machine of the installation. We will install Bintelan Analytics Platform on it, and also those modules that we want to activate (Face Recognition, License Plate Detection, Object Counting ...).
- **Analytics Engine:** sometimes, when we want to execute too many analytics simultaneously, it is a good idea to add more machines to the platform, so the executing analytics will get balanced through all the servers that compose the platform. With the installation of a simple package we will be able to add any server as a worker for our Analytics Master (this feature is only available in some versions of Bintelan Analytics Platform).
- **Analytics Client:** the client can be installed in any machine which has network communications with Bintelan Analytics Platform.



## 2 System Requirements

### 2.1 Hardware requirements

- **CPU:** Intel Core 2 Duo @ 2.0 GHz
- **RAM:** 2 GB RAM
- **Network:** Ethernet (1Gbit recommended)
- **Hard Disk:** Minimum 10 GB (depending on enrollees number)
- **Operating System:** Windows 7, Windows Server 2008 R2 or above (64 bits systems recommended)

These hardware requirements are only for Bintelan Analytics Platform, **not including analytics**. Depending on the number of analytics which will run together, more specific requirements will be added. These specific requirements are detailed on the user manual of each analytic.

### 2.2 Used Ports

Please ensure that the following ports are not blocked by any firewall or any other program using them:

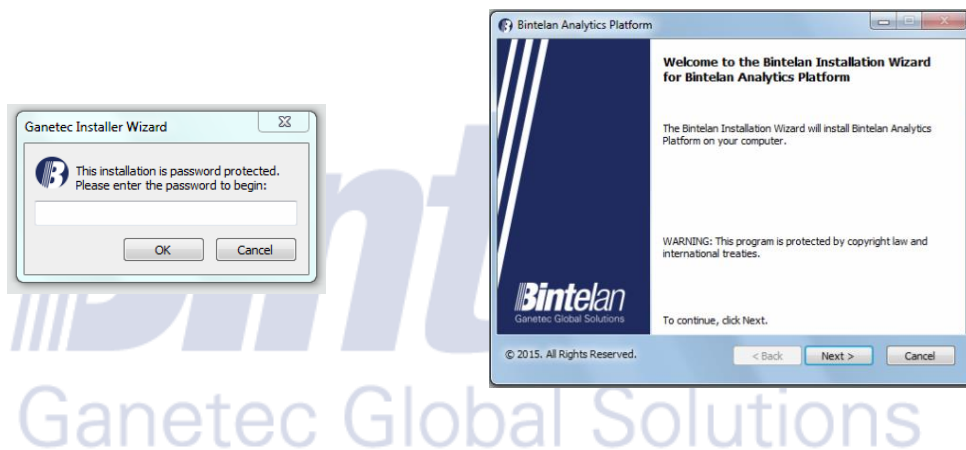
- Ports **5001** and **5002**: used by Bintelan Fusion Server
- Ports **3306**: used by Bintelan Database
- Ports **8124** and **8125**: used by Bintelan Service Controller
- Ports **8126** and **8127**: used by Bintelan Analytics Platform
- Port **8128**: used by Bintelan Statistics module

### 3 Installation process

In order to achieve the platform described in the previous section, we will need to install the platform in several steps:

1. Install Bintelan Analytics Platform
2. Install desired Bintelan Modules (should be installed in the same machine as 1).
3. Install Bintelan Client (can be installed anywhere).
4. Install the Bintelan Engine in the rest of the machines, which will process analytics (only available in some versions)

The Bintelan Analytics Server installer is a walkthrough, as described in the screen shots below. The rest of the installers are very similar.

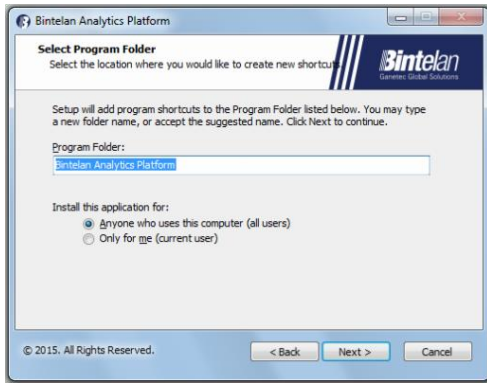


The installer is password-protected. This password is provided also in the mail with the installer link.

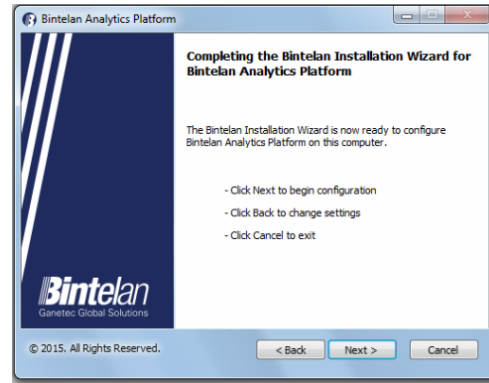
Click Next to continue.



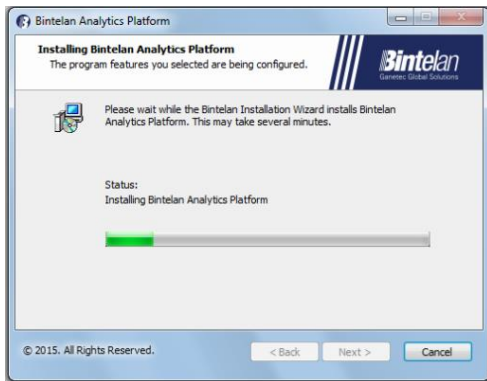
Read carefully the License Agreement and if you accept it, mark the check box and click Next.



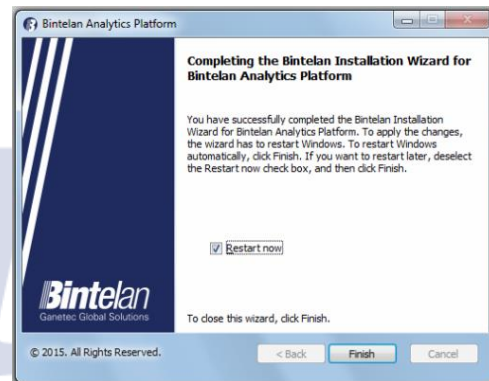
Specify the folder group where Bintelan Analytics shortcuts will be located in Windows Start menu.



Click Next to continue.



Wait until the installation process finishes.



A restart of the machine is required to complete the installation process.

After restarting the system, Bintelan Analytics Platform will be completely installed and functional, but we still will need to add the modules and the client in order to use it.

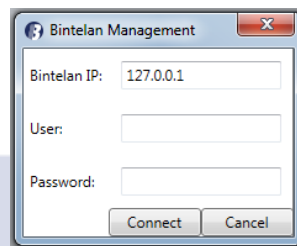
## 4 Bintelan Management Application

### 4.1 Introduction to Bintelan Management

The Bintelan Management Application is installed by default when installing Bintelan Analytics Platform, but it can also be installed on any other machine if desired.

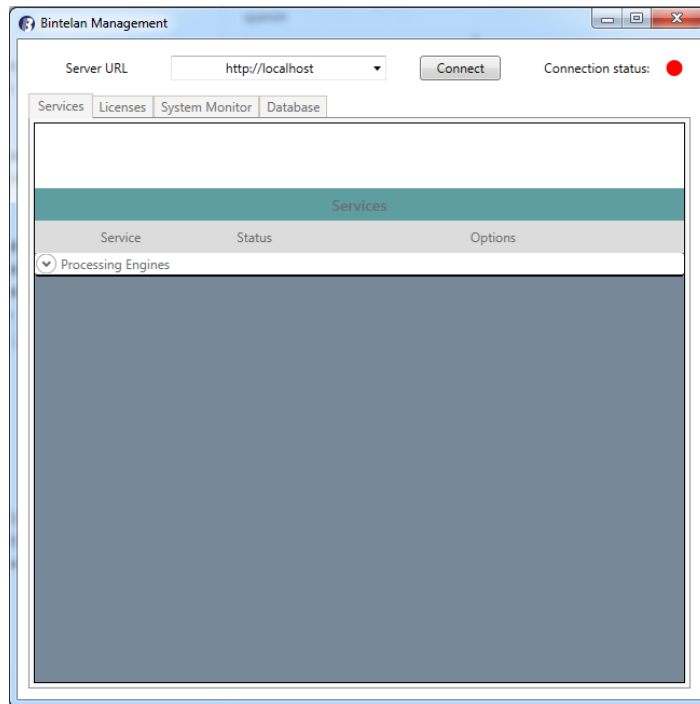
The default location for the application is *C:/Bintelan/bin/*. When launching, it will ask for the machine IP of the Bintelan Analytics Platform (default 127.0.0.1 if is installed on the same machine) and credentials. The default credentials to enter the application are the following (they can be modified inside the application in "Permissions" tab):

- Username: admin
- Password: Bintelan



After entering, you will see the main window of the Bintelan Management, where you must press the "**Connect**" button. If the Management Client has successfully connected to the platform, the connection status will change from red to green.





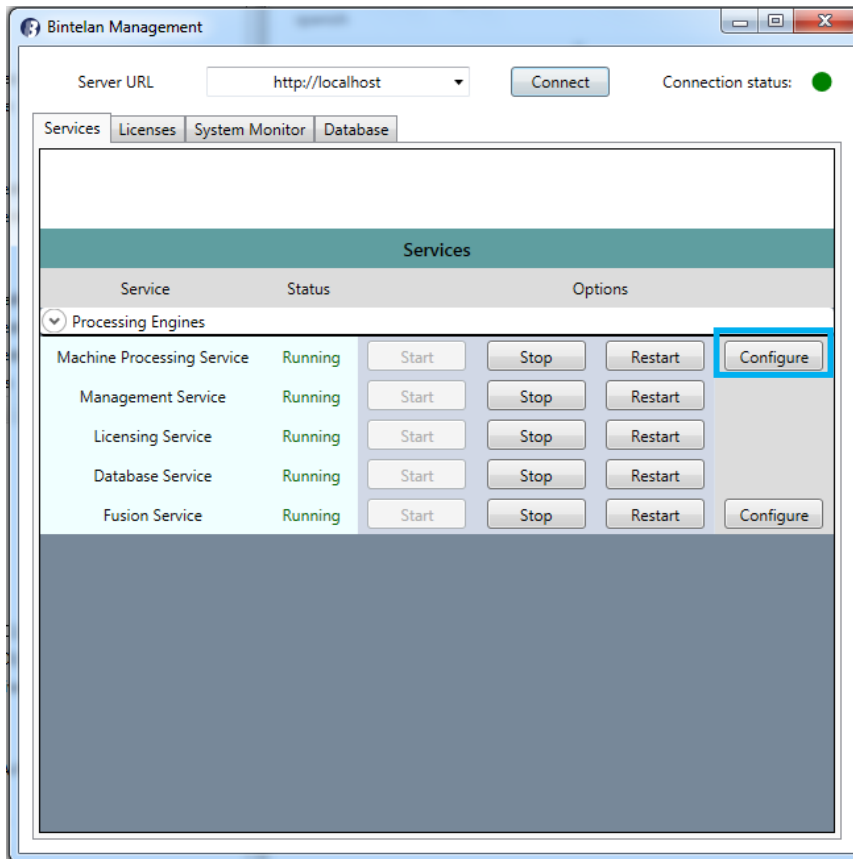
**NOTES:** In case you are not able to connect to Analytics Platform, check that you have correctly introduced the IP and port (server URL).

## 4.2 Service Monitoring

The default window of the Bintelan Management Application is the "**Services**" one. In this window, we can see the status of the 4 main services that comprise the Analytics Platform:

- **Machine Processing Service:** this service manages each individual process of the Analytics Platform.
- **Management Service:** this service controls the other services of the Analytics Platform.
- **Licensing Service:** this service manages the licenses of the Analytics Platform.
- **Database Service:** this service manages the database of the Analytics Platform.
- **Fusion Service:** this service manages the alarms of the Analytics Platform.

Additionally, the different processes can be started, stopped or restarted from this panel. Optionally, you can modify the settings of some of these, using the **Configure** button.



Each of these services has 7 states, which are described below:

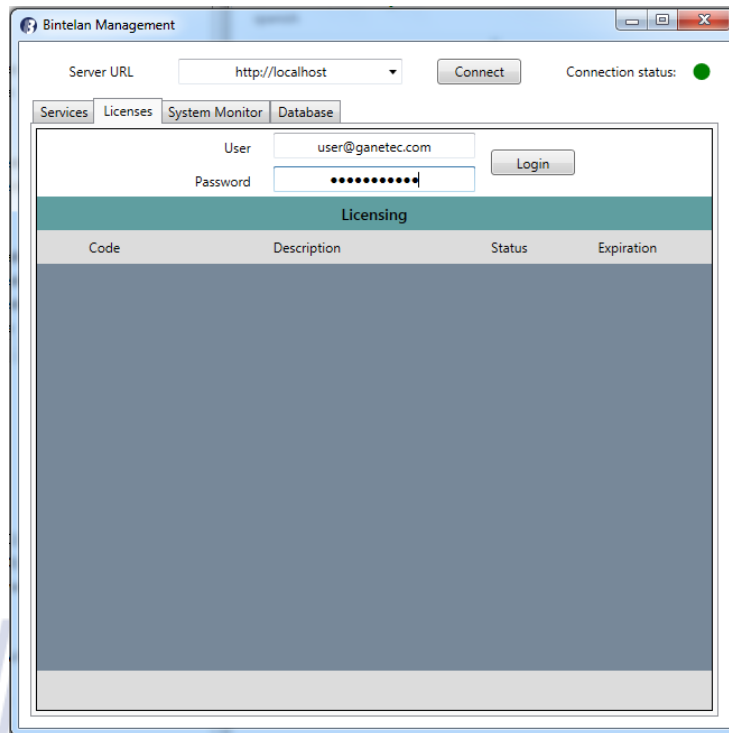
- **N/A:** the service is not installed in the machine.
- **Running:** the service is started.
- **Starting:** the service is being initialized.
- **Restarting:** the service is being restarted.
- **Stopping:** the service is being closed.
- **Error:** failed to retrieve the service, normally due to network failure.
- **Stopped:** the service is stopped.

### 4.3 License Activation

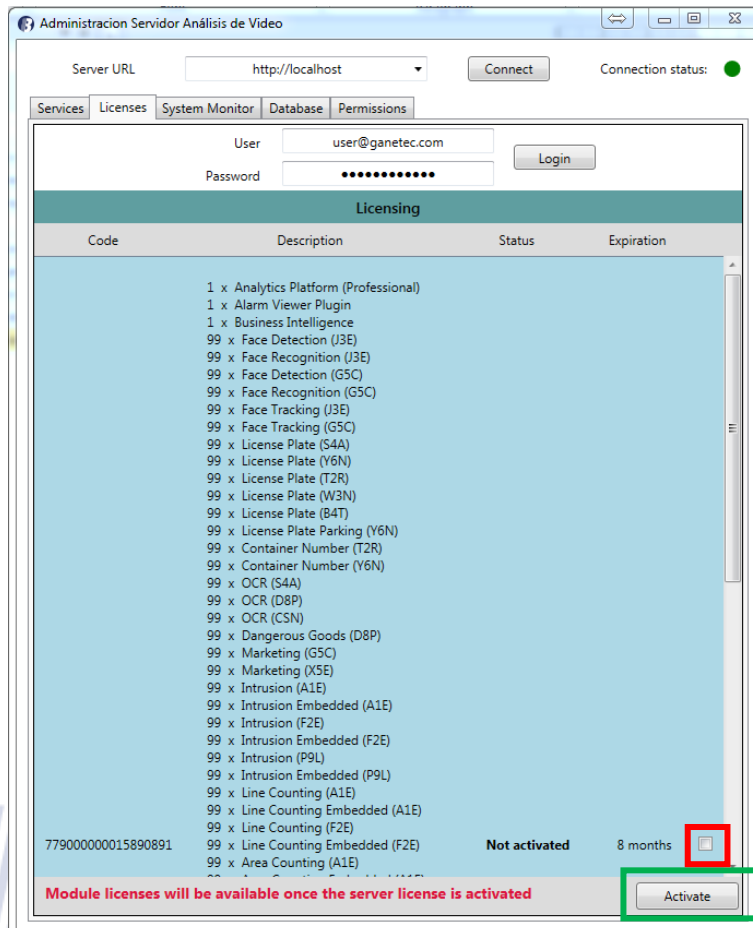
Once the Bintelan Analytics Platform is installed, you need to activate the purchased licenses. By default, the software provides 30-day trial period that will be automatically activated when you install the Bintelan Analytics Platform. If you are using the software during this trial period, you do not need to access the Licenses tab.

The trial period allows you to simultaneously use one process for each modules you have installed.

In order to proceed with the license activation, go to the **Licenses** tab in the Management Client. In the next step, you must enter the credentials received when you purchased the licenses.

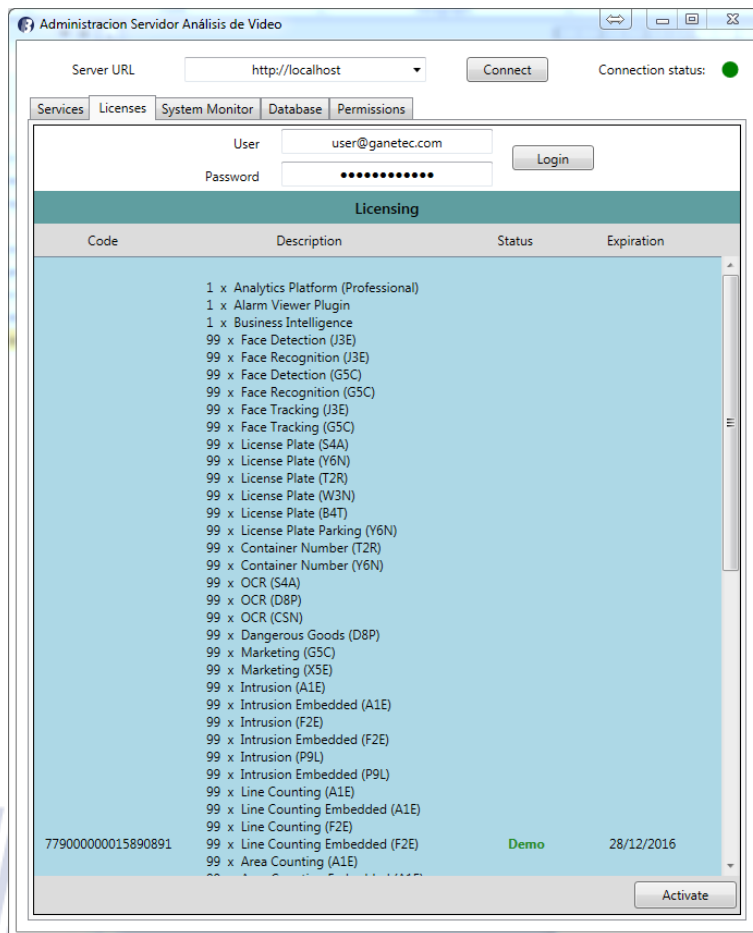


Once you have accessed the Licenses tab, you will see that there are two subgroups of licenses: Platform type and modules. Each installation requires at least one Platform license for each installation. The modules licenses will only be activated if it's bound to a valid Platform license.



Select the **checkbox** to activate the Platform type license and as many modules licenses as the license has associated and press the "**Activate**" button.

The next image depicts the Platform type and modules bound to this license. The number that precedes the license type refers to the simultaneous processes that will allow the Platform to work with. For example, the previous license is valid for 3 simultaneous processes of each of the modules shown.



Finally, on the last column you will be able to see the expiration date of this license. If the expiration date is not available (N/A), this means that this license will never expire.

Ganetec Global Solutions

#### 4.4 Hardware Licenses

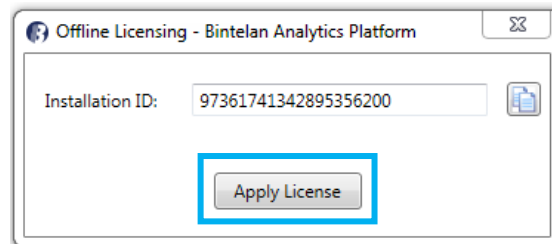
Some of the Bintelan Modules that you install require an additional license. This depends on the module and provider you are using. In many cases, this licenses are bound to the computer hardware. To obtain the necessary hardware information you should launch an application that will generate it. Access the **Licenses** folder, in the path where you have performed the Bintelan Analytics Platform installation, usually **C:/Bintelan/Licenses/**. From this folder, launch the **HardwareKey.exe** application with Administration rights. A file with the extensión **.hwk** will be generated.

Send it to the following email: [license@ganetec.com](mailto:license@ganetec.com). They will contact you back with the requested specific module licenses.

**NOTE:** If you perform some hardware changes on your computer you may be requested to generate this file again.

## 4.5 Offline Licenses

The Bintelan license requires of an internet connection. Therefore, if you want to use the system without internet connection you will need to activate an offline license. To do so access the **Licenses** folder, in the path where you have performed the Bintelan Analytics Platform installation, usually *C:/Bintelan/Licenses/*. From this folder, launch the **OfflineLicense.exe** application with Administration rights. You will be prompted with the following window:



You will now need to copy the **Installation ID** and send it to the following email: [license@ganetec.com](mailto:license@ganetec.com). They will contact you back with the offline license.

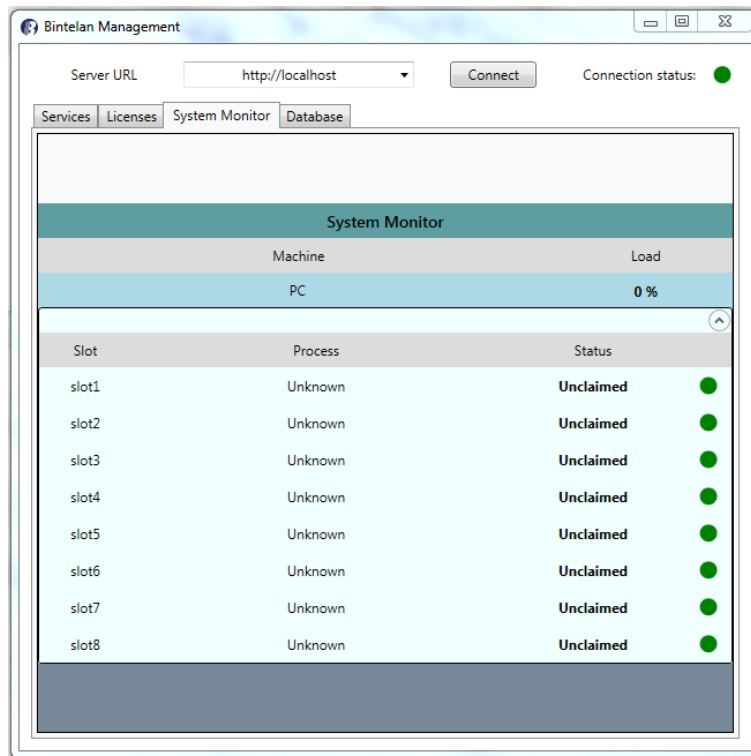
Once you have received the offline license, it will be a file with the extension **Ganetec Licensing File (.ggs)**, you need to load it in the system. Press the **Apply License** button from the Offline license application and select the offline license file provided. Accept and your offline license will be applied. Now you can use the Bintelan Analytics Platform without internet connection.

**NOTE:** Take into account that when you apply an offline license all Bintelan services will be restarted.

## 4.6 System Monitor

The System Monitor shows, in real time, the status of the different processes that are running on the system. Additionally, you can view the status details of each of them.

Furthermore, the monitor provides a summarized view of the resources available in the system. Therefore, one can clearly identify the status of free and used resources by each running process, such as the number of free slots and the overall load percentage of the system.

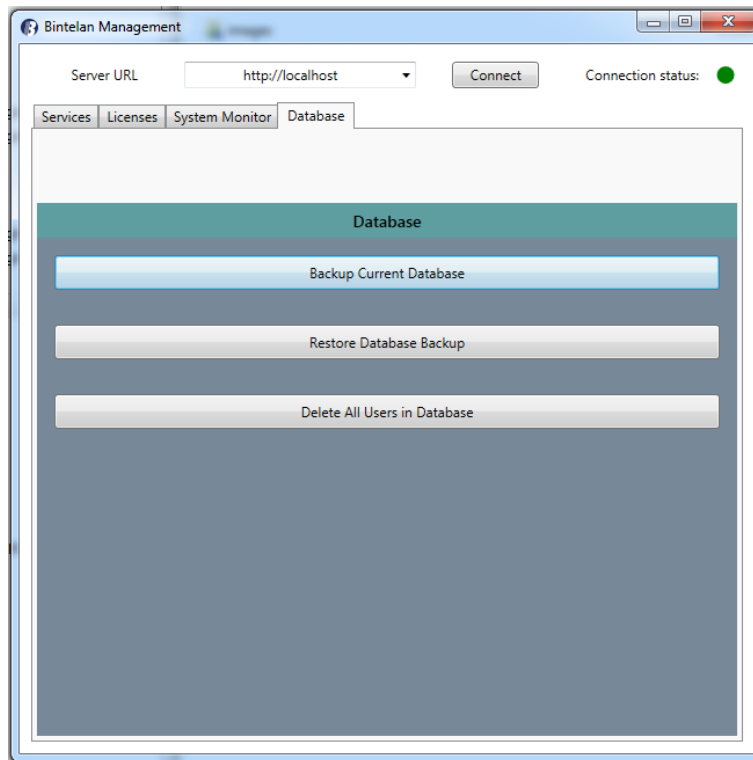


## 4.7 Database Management

This tab has three options for the database management. The first one allows the user to perform a complete database backup. This process may take several minutes depending on how large is the database. Several files are generated during this process. They should all be saved because all are part of the backup.

The second option is for restoring a previous database backup. This process can also take a long time depending on the backup size. This is useful when updating the system or major hardware changes, which requires to execute tasks on the database. It is always recommended in these cases to make regularly backups, in order to prevent accidental loss of information.

Finally, the third option allows you to delete all database users. Note that this process is irreversible and a misuse may result in a complete loss of information from the database.



**NOTE 1:** Please note that backup versions must be compatible between them.

**NOTE 2:** We recommend that you make periodic backups as a safety measure.

*Bintelan*  
Ganetec Global Solutions





[www.ganetec.com](http://www.ganetec.com)