

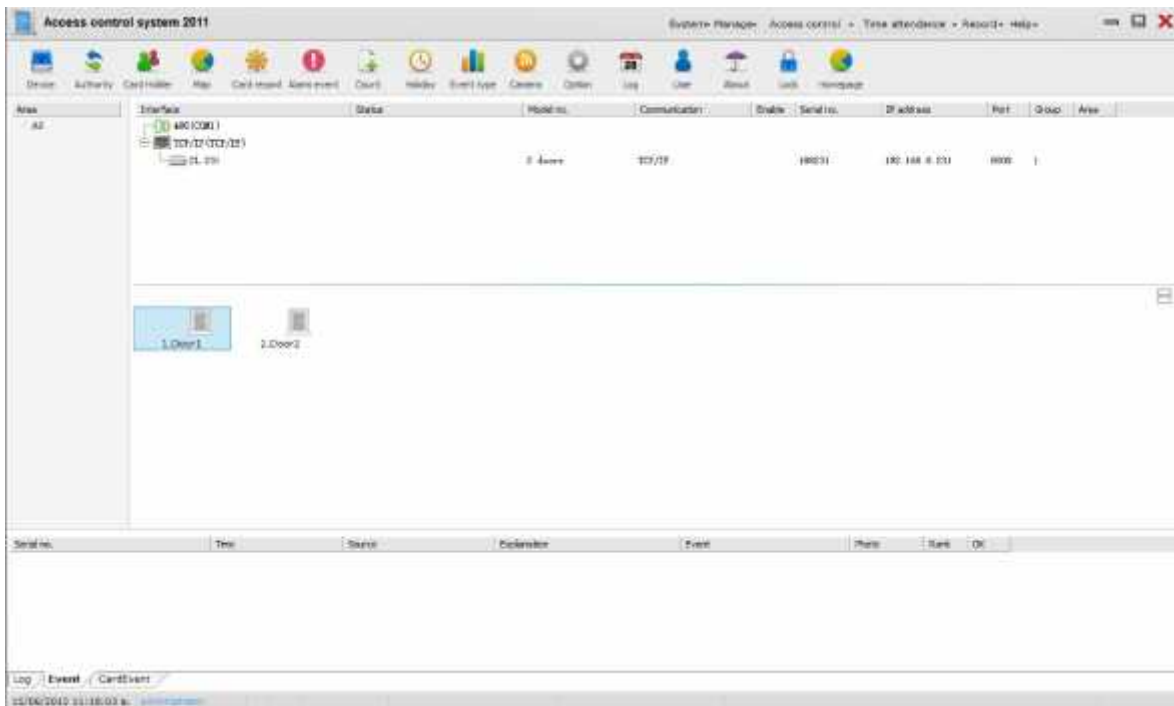
# TIP TÉCNICO: Aumentar/reducir tiempo apertura ACS

## Descripción:

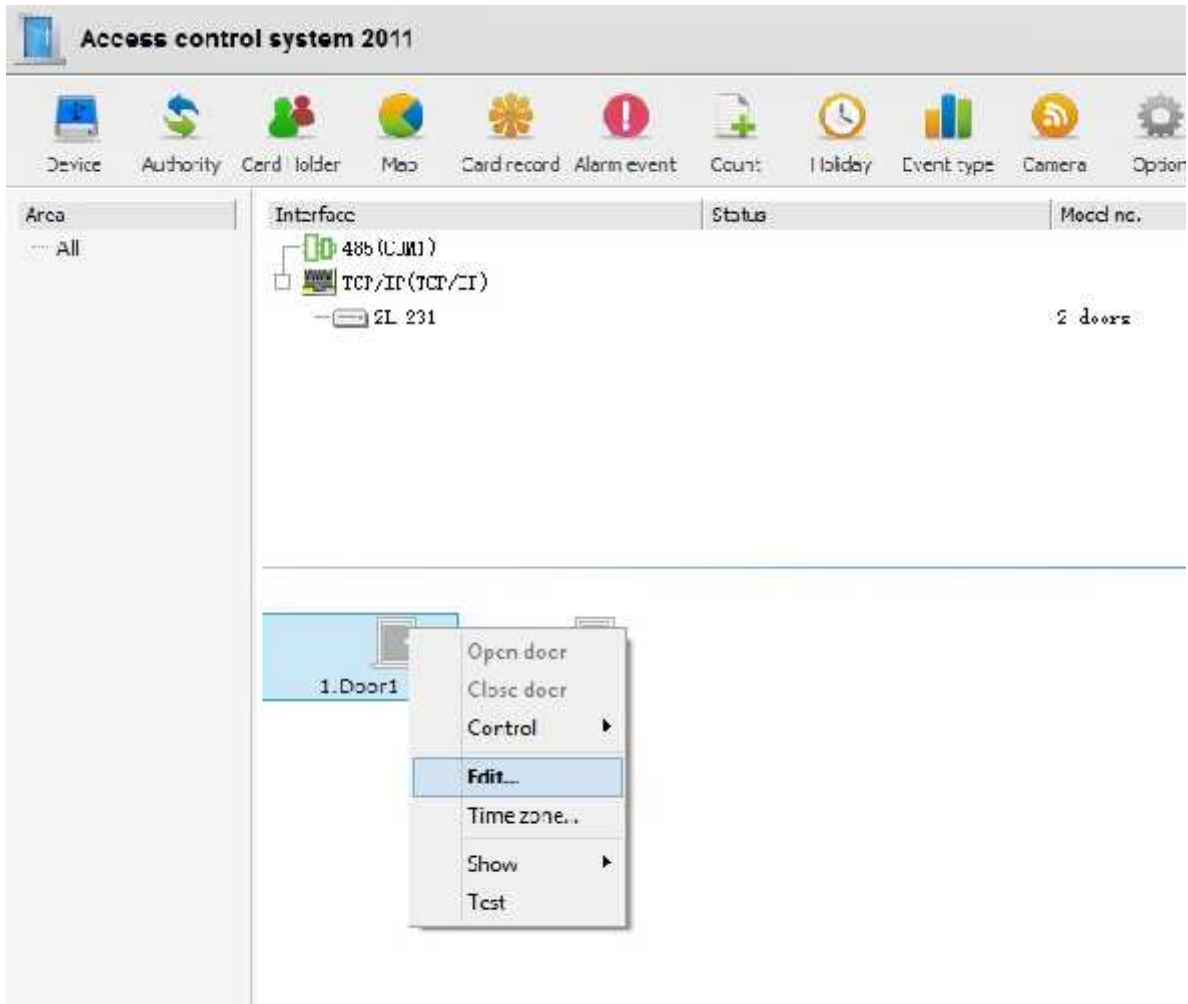
En el siguiente manual se describe la configuración necesaria para poder aumentar o reducir el tiempo que dure una puerta abierta en Access Control System 2011

## Configuración del equipo

En ACS2011 seleccionamos la puerta que se va a modificar

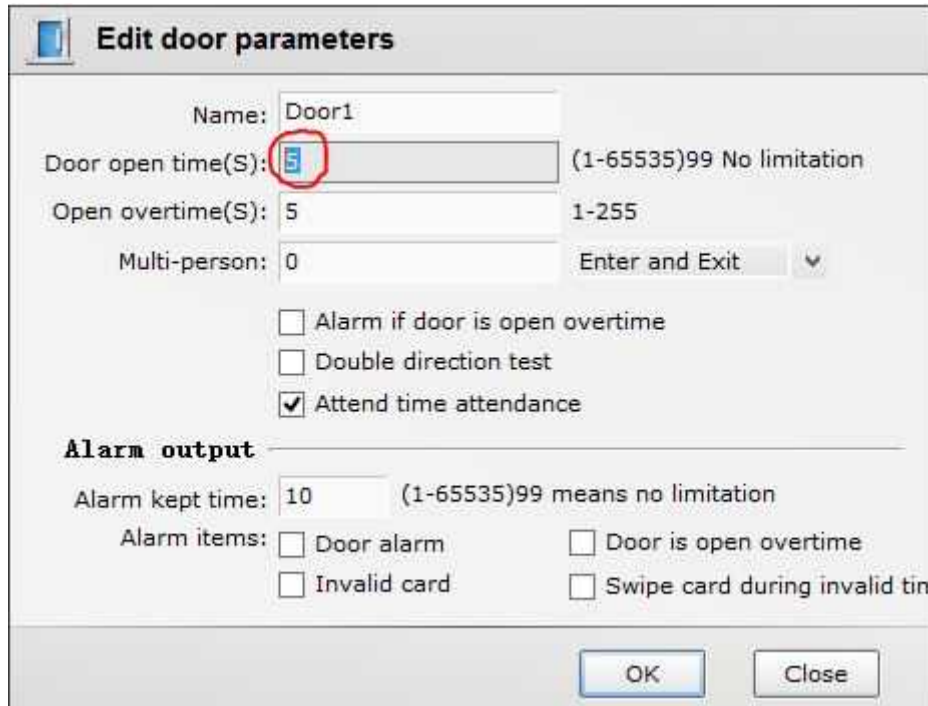


Clic derecho y elegimos **Edit...**



The screenshot shows the 'Access control system 2011' software interface. At the top, there is a toolbar with icons for Device, Authority, Card folder, Map, Card record, Alarm event, Count, Holiday, Event type, Camera, and Options. Below the toolbar is a tree view showing the system hierarchy. The tree view has columns for 'Area', 'Interface', 'Status', and 'Model no.'. Under the 'Area' column, there is a sub-item 'All'. Under the 'Interface' column, there is a sub-item '486 (CJM1)' which is expanded to show 'TCP/IP (TCP/II)' and '2L 231'. The 'Status' column is empty, and the 'Model no.' column shows '2 doors' for the '2L 231' item. A context menu is open over the '1.Door1' item, with the following options: 'Open door', 'Close door', 'Control', 'Edit...' (highlighted), 'Time zone..', 'Show', and 'Test'.

En la sección **Door open time(S)** es donde pondremos el tiempo en segundos que queremos que nuestra puerta dure abierta antes de cerrarse automáticamente, el tiempo mínimo es de 1 segundo



**Edit door parameters**

Name: Door1

Door open time(S): 5 (1-65535)99 No limitation

Open overtime(S): 5 1-255

Multi-person: 0 Enter and Exit

Alarm if door is open overtime

Double direction test

Attend time attendance

**Alarm output**

Alarm kept time: 10 (1-65535)99 means no limitation

Alarm items:  Door alarm  Door is open overtime

Invalid card  Swipe card during invalid time

OK Close